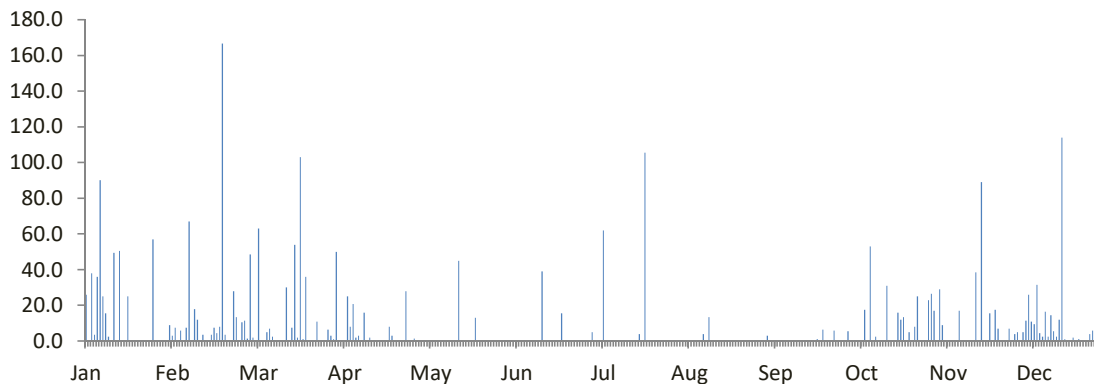


DATA CURAH HUJAN HARIAN

Nama Pos	: Juwero / Klimatologi	Provinsi	: Jawa Tengah
Nomor Pos	: 103	Kota/Kabupaten	: Kendal
Jenis Alat	: Manual	Kecamatan	: Gemuh
Koordinat	: 7 0' 40.8" LS-110 8' 8.9" BT	Desa/Kampung	: Juwero
Elevasi	: + 2.82 m	Pengelola	: Balai PSDA Bodri Kuto
SWS - DAS	: Kali Bodri	Didirikan	: DPMA
Tahun Pendirian	: 1980	Tahun	: 2020

TANGGAL	BULAN (mm)											
	Jan	Feb	Mar	Apr	Mei	Jun	Jul	Ags	Sep	Okt	Nov	Des
1	26.0	3.0	48.5	50.0	0.0	0.0	0.0	0.0	0.0	0.0	26.5	4.0
2	0.0	7.5	2.0	0.0	0.0	0.0	5.0	0.0	0.0	5.5	17.0	5.0
3	38.0	0.0	0.0	0.0	0.0	0.0	0.0	0.0	3.0	0.0	0.0	0.0
4	3.5	6.0	63.0	0.0	0.0	0.0	0.0	0.0	0.0	0.0	29.0	5.0
5	36.0	0.0	0.0	25.0	0.0	0.0	0.0	0.0	0.0	0.0	9.0	11.5
6	90.0	7.5	0.0	8.0	0.0	0.0	62.0	0.0	0.0	0.0	0.0	26.0
7	25.0	67.0	5.0	20.8	0.0	0.0	0.0	0.0	0.0	0.0	0.0	11.0
8	15.5	0.0	7.0	2.0	0.0	0.0	0.0	0.0	0.0	17.5	0.0	9.5
9	2.5	18.0	2.5	3.0	0.0	0.0	0.0	0.0	0.0	0.0	0.0	31.5
10	0.0	12.0	0.0	0.0	0.0	0.0	0.0	0.0	0.0	53.0	0.0	4.5
11	49.5	0.0	0.0	16.0	0.0	0.0	0.0	4.0	0.0	0.0	17.0	2.5
12	0.0	3.5	0.0	0.0	0.0	0.0	0.0	0.0	0.0	2.5	0.0	16.5
13	50.5	0.0	0.0	2.0	0.0	0.0	0.0	13.5	0.0	0.0	0.0	2.5
14	0.0	0.0	30.0	0.0	0.0	39.0	0.0	0.0	0.0	0.0	0.0	14.5
15	0.0	3.5	0.0	0.0	45.0	0.0	0.0	0.0	0.0	0.0	0.0	5.5
16	25.0	7.5	7.5	0.0	0.0	0.0	0.0	0.0	0.0	31.0	0.0	2.5
17	0.0	4.5	54.0	0.0	0.0	0.0	0.0	0.0	0.0	0.0	38.5	12.0
18	0.0	8.0	2.0	0.0	0.0	0.0	0.0	0.0	0.0	0.0	0.0	114.0
19	0.0	166.5	103.0	0.0	0.0	0.0	4.0	0.0	0.0	0.0	89.0	1.0
20	0.0	3.5	1.0	8.0	0.0	0.0	0.0	0.0	0.0	16.0	0.0	0.0
21	0.0	0.0	36.0	3.0	13.0	15.5	105.5	0.0	1.0	12.0	0.0	0.0
22	0.0	0.0	0.0	0.0	0.0	0.0	0.0	0.0	0.0	13.5	15.5	2.0
23	0.0	28.0	0.0	0.0	0.0	0.0	0.0	0.0	6.5	0.0	0.0	0.0
24	0.0	13.5	0.0	0.0	0.0	0.0	0.0	0.0	5.0	17.5	1.0	0.0
25	57.0	0.0	11.0	0.0	0.0	0.0	0.0	0.0	0.0	0.0	7.0	0.0
26	0.0	10.5	0.0	28.0	0.0	0.0	0.0	0.0	0.0	8.0	0.0	0.0
27	0.0	11.5	0.0	0.0	0.0	0.0	0.0	0.0	6.0	25.0	0.0	0.0
28	0.0	1.5	0.0	0.0	0.0	0.0	0.0	0.0	0.0	0.0	0.0	4.0
29	0.0	13.0	6.5	1.5	0.0	0.0	0.0	0.0	0.0	0.0	7.0	6.0
30	0.0		3.0	0.0	0.0	0.0	0.0	0.0	0.0	0.0	0.0	10.5
31	9.0		1.0		0.0		0.0	0.0		23.0		0.0
Hujan Maks	90.0	166.5	103.0	50.0	45.0	39.0	105.5	13.5	6.5	53.0	89.0	114.0
Jml. Curah Hujan	427.5	396.0	383.0	167.3	58.0	54.5	176.5	17.5	16.5	212.0	273.0	302.5
Jml. Hari Hujan	13	20	17	12	2	2	4	2	4	12	11	23
Jml. data (1-15)	15	15	15	15	15	15	15	15	15	15	15	15
Jml. Hujan (1-15)	336.5	128.0	158.0	126.8	45.0	39.0	67.0	17.5	3.0	78.5	98.5	149.5
Jml. Data (16-31)	16	14	16	15	16	15	16	16	15	16	15	16
Jml. Hujan (16-31)	91.0	268.0	225.0	40.5	13.0	15.5	109.5	0.0	13.5	133.5	174.5	153.0
Tahunan	Hujan Maksimum			Jumlah Curah Hujan			Jumlah Hari Hujan			Hujan Ekstrim		
	166.5			2484.3			122			210		

GRAFIK HUJAN (mm)

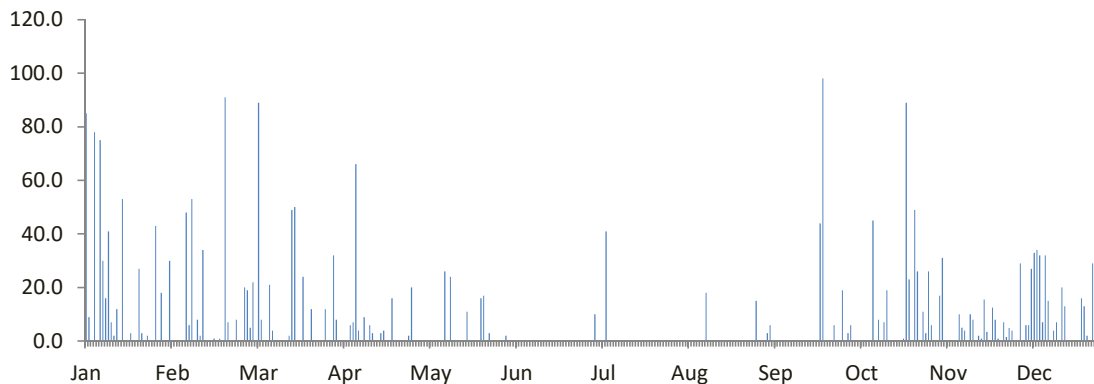


DATA CURAH HUJAN HARIAN

Nama Pos	: Dangi / Klimatologi	Provinsi	: Jawa Tengah
Nomor Pos	: 75 a	Kota/Kabupaten	: Demak
Jenis Alat	: Manual	Kecamatan	: Mijen
Koordinat	: 7 1' 35" LS-110 42' 58.3" BT	Desa/Kampung	: Dangi
Elevasi	: -	Pengelola	: Balai PSDA Bodri Kuto
SWS - DAS	: K. Tuntang	Didirikan	: Dinas PU Pengairan
Tahun Pendirian	: 1992	Tahun	: 2020

TANGGAL	BULAN (mm)											
	Jan	Feb	Mar	Apr	Mei	Jun	Jul	Ags	Sep	Okt	Nov	Des
1	85.0	0.0	5.0	8.0	0.0	2.0	0.0	0.0	0.0	0.0	6.0	0.0
2	9.0	0.0	22.0	0.0	0.0	0.0	0.0	0.0	0.0	3.0	0.0	0.0
3	0.0	0.0	0.0	0.0	0.0	0.0	10.0	0.0	3.0	6.0	0.0	29.0
4	78.0	0.0	89.0	0.0	0.0	0.0	0.0	0.0	6.0	0.0	17.0	0.0
5	0.0	0.0	8.0	0.0	0.0	0.0	0.0	0.0	0.0	0.0	31.0	6.0
6	75.0	48.0	0.0	6.0	0.0	0.0	0.0	0.0	0.0	0.0	0.0	6.0
7	30.0	6.0	0.0	7.0	0.0	0.0	41.0	0.0	0.0	0.0	0.0	27.0
8	16.0	53.0	21.0	66.0	0.0	0.0	0.0	0.0	0.0	0.0	0.0	33.0
9	41.0	0.0	4.0	4.0	0.0	0.0	0.0	0.0	0.0	0.0	0.0	34.0
10	7.0	8.0	0.0	0.0	26.0	0.0	0.0	0.0	0.0	0.0	0.0	32.0
11	2.0	2.0	0.0	9.0	0.0	0.0	0.0	0.0	0.0	45.0	10.0	7.0
12	12.0	34.0	0.0	0.0	24.0	0.0	0.0	18.0	0.0	0.0	5.0	32.0
13	0.0	0.0	0.0	6.0	0.0	0.0	0.0	0.0	0.0	8.0	4.0	15.0
14	53.0	0.0	0.0	3.0	0.0	0.0	0.0	0.0	0.0	0.0	0.0	0.0
15	0.0	0.0	2.0	0.0	0.0	0.0	0.0	0.0	0.0	7.0	10.0	4.0
16	0.0	1.0	49.0	0.0	0.0	0.0	0.0	0.0	0.0	19.0	8.0	7.0
17	3.0	0.0	50.0	3.0	0.0	0.0	0.0	0.0	0.0	0.0	0.0	0.0
18	0.0	1.0	0.0	4.0	11.0	0.0	0.0	0.0	0.0	0.0	2.0	20.0
19	0.0	0.0	0.0	0.0	0.0	0.0	0.0	0.0	0.0	0.0	1.0	13.0
20	27.0	91.0	24.0	0.0	0.0	0.0	0.0	0.0	0.0	0.0	15.5	0.0
21	3.0	7.0	0.0	16.0	0.0	0.0	0.0	0.0	0.0	0.0	3.5	0.0
22	0.0	0.0	0.0	0.0	0.0	0.0	0.0	0.0	44.0	1.0	0.0	0.0
23	2.0	0.0	12.0	0.0	16.0	0.0	0.0	0.0	98.0	89.0	12.5	0.0
24	0.0	8.0	0.0	0.0	17.0	0.0	0.0	0.0	0.0	23.0	8.0	0.0
25	0.0	0.0	0.0	0.0	0.0	0.0	0.0	0.0	0.0	0.0	1.0	16.0
26	43.0	0.0	0.0	0.0	3.0	0.0	0.0	0.0	0.0	49.0	0.0	13.0
27	0.0	20.0	0.0	2.0	0.0	0.0	0.0	0.0	6.0	26.0	7.1	2.0
28	18.0	19.0	12.0	20.0	0.0	0.0	0.0	0.0	0.0	0.0	1.5	0.0
29	0.0	23.0	0.0	0.0	0.0	0.0	0.0	0.0	0.0	11.0	4.9	29.0
30	0.0		0.0	0.0	0.0	0.0	0.0	15.0	19.0	3.0	4.0	4.0
31	30.0		32.0		0.0		0.0		26.0		16.0	
Hujan Maks	85.0	91.0	89.0	66.0	26.0	2.0	41.0	18.0	98.0	89.0	31.0	34.0
Jml. Curah Hujan	534.0	321.0	330.0	154.0	97.0	2.0	51.0	33.0	176.0	316.0	152.0	345.0
Jml. Hari Hujan	18	14	13	13	6	1	2	2	6	14	19	20
Jml. data (1-15)	15	15	15	15	15	15	15	15	15	15	15	15
Jml. Hujan (1-15)	408.0	151.0	151.0	109.0	50.0	2.0	51.0	18.0	9.0	69.0	83.0	225.0
Jml. Data (16-31)	16	14	16	15	16	15	16	16	15	16	15	16
Jml. Hujan (16-31)	126.0	170.0	179.0	45.0	47.0	0.0	0.0	15.0	167.0	247.0	69.0	120.0
Tahunan	Hujan Maksimum			Jumlah Curah Hujan			Jumlah Hari Hujan			Hujan Ekstrim		
	98.0			2511.0			128			140		

GRAFIK HUJAN (mm)

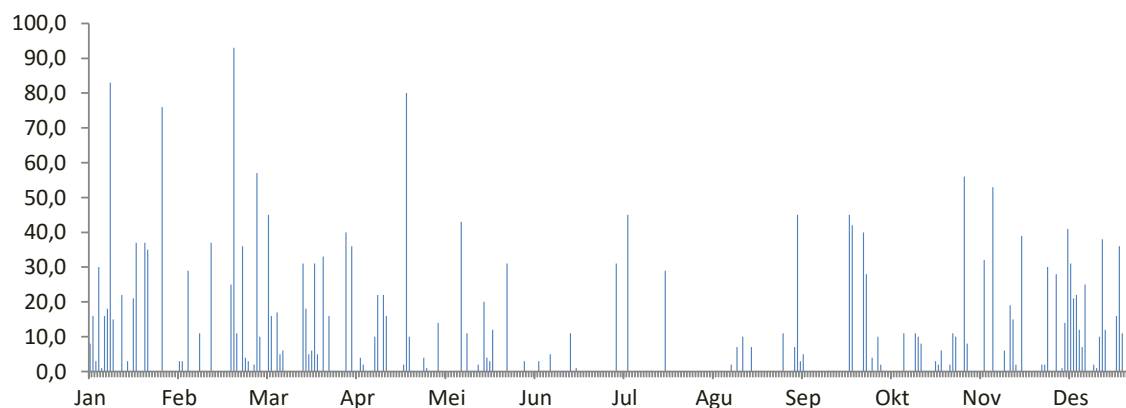


DATA CURAH HUJAN HARIAN

Nama Pos	: Karangroto / Genuk	Provinsi	: Jawa Tengah
Nomor Pos	: 94	Kota/Kabupaten	: Semarang
Jenis Alat	: Manual	Kecamatan	: Genuk
Koordinat	: 7 6' 26.9" LS-110 11' 31" BT	Desa/Kampung	: Karangroto
Elevasi	: + 3 m	Pengelola	: Balai PSDA Bodri Kuto
SWS - DAS	: K. Babon	Didirikan	: Dinas PU Pengairan
Tahun Pendirian	: -	Tahun	: 2020

TANGGAL	BULAN (mm)											
	Jan	Feb	Mar	Apr	Mei	Jun	Jul	Ags	Sep	Okt	Nov	Des
1	8,0	3,0	10,0	0,0	0,0	3,0	0,0	0,0	0,0	0,0	56,0	0,0
2	16,0	3,0	0,0	36,0	14,0	0,0	0,0	0,0	0,0	10,0	8,0	0,0
3	3,0	0,0	0,0	0,0	0,0	0,0	31,0	0,0	7,0	2,0	0,0	28,0
4	30,0	29,0	45,0	0,0	0,0	0,0	0,0	0,0	45,0	0,0	0,0	0,0
5	1,0	0,0	16,0	4,0	0,0	0,0	0,0	0,0	3,0	0,0	0,0	1,0
6	16,0	0,0	0,0	2,0	0,0	3,0	0,0	0,0	5,0	0,0	0,0	14,0
7	18,0	0,0	17,0	0,0	0,0	0,0	45,0	0,0	0,0	0,0	0,0	41,0
8	83,0	11,0	5,0	0,0	0,0	0,0	0,0	0,0	0,0	0,0	32,0	31,0
9	15,0	0,0	6,0	0,0	0,0	0,0	0,0	0,0	0,0	0,0	0,0	21,0
10	0,0	0,0	0,0	10,0	43,0	5,0	0,0	0,0	0,0	0,0	0,0	22,0
11	0,0	0,0	0,0	22,0	0,0	0,0	0,0	0,0	0,0	11,0	53,0	12,0
12	22,0	37,0	0,0	0,0	11,0	0,0	0,0	2,0	0,0	0,0	0,0	7,0
13	0,0	0,0	0,0	22,0	0,0	0,0	0,0	0,0	0,0	0,0	0,0	25,0
14	3,0	0,0	0,0	16,0	0,0	0,0	0,0	7,0	0,0	0,0	0,0	0,0
15	0,0	0,0	0,0	0,0	0,0	0,0	0,0	0,0	0,0	11,0	6,0	0,0
16	21,0	0,0	31,0	0,0	2,0	0,0	0,0	10,0	0,0	10,0	0,0	2,0
17	37,0	0,0	18,0	0,0	0,0	11,0	0,0	0,0	0,0	8,0	19,0	1,0
18	0,0	0,0	5,0	0,0	20,0	0,0	0,0	0,0	0,0	0,0	15,0	10,0
19	0,0	25,0	6,0	0,0	4,0	1,0	0,0	7,0	0,0	0,0	2,0	38,0
20	37,0	93,0	31,0	2,0	3,0	0,0	29,0	0,0	0,0	0,0	0,0	12,0
21	35,0	11,0	5,0	80,0	12,0	0,0	0,0	0,0	0,0	0,0	39,0	0,0
22	0,0	0,0	0,0	10,0	0,0	0,0	0,0	0,0	45,0	3,0	0,0	0,0
23	0,0	36,0	33,0	0,0	0,0	0,0	0,0	0,0	42,0	2,0	0,0	0,0
24	0,0	4,0	0,0	0,0	0,0	0,0	0,0	0,0	0,0	6,0	0,0	16,0
25	0,0	3,0	16,0	0,0	0,0	0,0	0,0	0,0	0,0	0,0	0,0	36,0
26	76,0	0,0	0,0	0,0	31,0	0,0	0,0	0,0	0,0	0,0	0,0	11,0
27	0,0	2,0	0,0	4,0	0,0	0,0	0,0	0,0	40,0	2,0	0,0	0,0
28	0,0	57,0	0,0	1,0	0,0	0,0	0,0	0,0	28,0	11,0	2,0	0,0
29	0,0	14,0	0,0	0,0	0,0	0,0	0,0	0,0	0,0	10,0	2,0	23,0
30	0,0		0,0	0,0	0,0	0,0	0,0	11,0	4,0	0,0	30,0	5,0
31	0,0		40,0		0,0		0,0	0,0		0,0		9,0
Hujan Maks	83,0	93,0	45,0	80,0	43,0	11,0	45,0	11,0	45,0	11,0	56,0	41,0
Jml. Curah Hujan	421,0	328,0	284,0	209,0	140,0	23,0	105,0	37,0	219,0	86,0	264,0	365,0
Jml. Hari Hujan	16	14	15	12	9	5	3	5	9	12	12	21
Jml. data (1-15)	15	15	15	15	15	15	15	15	15	15	15	15
Jml. Hujan (1-15)	215,0	83,0	99,0	112,0	68,0	11,0	76,0	9,0	60,0	34,0	155,0	202,0
Jml. Data (16-31)	16	16	16	16	16	16	16	16	16	16	16	16
Jml. Hujan (16-31)	206,0	245,0	185,0	97,0	72,0	12,0	29,0	28,0	159,0	52,0	109,0	163,0
Tahunan	Hujan Maksimum		Jumlah Curah Hujan			Jumlah Hari Hujan			Hujan Ekstrim			
	93,0		2481,0			133			182			

GRAFIK HUJAN (mm)

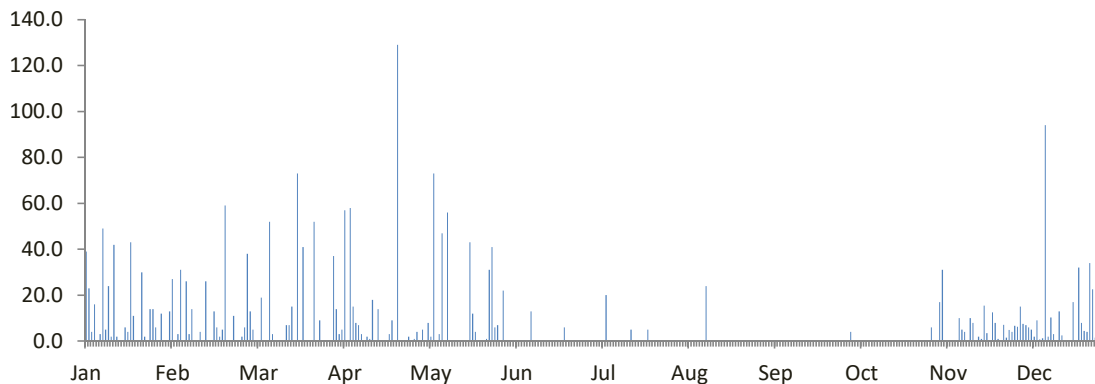


DATA CURAH HUJAN HARIAN

Nama Pos	: Rawa Pening Klimatologi	Provinsi	: Jawa Tengah
Nomor Pos	: 51a	Kota/Kabupaten	: Semarang
Jenis Alat	: Manual	Kecamatan	: Ambarawa
Koordinat	: 7 15' 56.3" LS-110 25' 24.4" BT	Desa/Kampung	: Rawapening
Elevasi	: -	Pengelola	: BPSDA Bodri Kuto
SWS - DAS	: Tuntang	Didirikan	: Dinas PU Pengairan
Tahun Pendirian	: 1990	Tahun	: 2020

TANGGAL	BULAN (mm)											
	Jan	Feb	Mar	Apr	Mei	Jun	Jul	Ags	Sep	Okt	Nov	Des
1	39.0	27.0	13.0	14.0	0.0	0.0	0.0	0.0	0.0	0.0	6.0	6.7
2	23.0	0.0	5.0	3.0	5.0	0.0	0.0	0.0	0.0	0.0	0.0	6.2
3	4.0	3.0	0.0	5.0	0.0	0.0	0.0	0.0	0.0	4.0	0.0	15.0
4	16.0	31.0	0.0	57.0	8.0	0.0	0.0	0.0	0.0	0.0	17.0	7.5
5	0.0	0.0	19.0	0.0	2.0	0.0	0.0	0.0	0.0	0.0	31.0	7.0
6	3.0	26.0	0.0	58.0	73.0	0.0	0.0	0.0	0.0	0.0	0.0	6.0
7	49.0	3.0	0.0	15.0	0.0	0.0	20.0	0.0	0.0	0.0	0.0	5.0
8	5.0	14.0	52.0	8.0	3.0	0.0	0.0	0.0	0.0	0.0	0.0	2.0
9	24.0	0.0	3.0	7.0	47.0	0.0	0.0	0.0	0.0	0.0	0.0	9.0
10	2.0	0.0	0.0	3.0	0.0	13.0	0.0	0.0	0.0	0.0	0.0	0.7
11	42.0	4.0	0.0	0.0	56.0	0.0	0.0	0.0	0.0	0.0	10.0	1.2
12	2.0	0.0	0.0	2.0	0.0	0.0	0.0	24.0	0.0	0.0	5.0	94.0
13	0.0	26.0	0.0	1.0	0.0	0.0	0.0	0.0	0.0	0.0	4.0	2.0
14	0.0	0.0	7.0	18.0	0.0	0.0	0.0	0.0	0.0	0.0	0.0	10.3
15	6.0	0.0	7.0	0.0	0.0	0.0	0.0	0.0	0.0	0.0	10.0	3.0
16	4.0	13.0	15.0	14.0	0.0	0.0	5.0	0.0	0.0	0.0	8.0	0.0
17	43.0	6.0	0.0	0.0	0.0	0.0	0.0	0.0	0.0	0.0	0.0	13.0
18	11.0	2.0	73.0	0.0	0.0	0.0	0.0	0.0	0.0	0.0	2.0	2.5
19	0.0	5.0	0.0	0.0	43.0	0.0	0.0		0.0	0.0	1.0	0.0
20	0.0	59.0	41.0	3.0	12.0	0.0	0.0		0.0	0.0	15.5	0.0
21	30.0	0.0	0.0	9.0	4.0	0.0	0.0		0.0	0.0	3.5	0.0
22	2.0	0.0	0.0	0.0	0.0	6.0	5.0		0.0	0.0	0.0	17.0
23	0.0	11.0	0.0	129.0	0.0	0.0	0.0		0.0	0.0	12.5	0.0
24	14.0	0.0	52.0	0.0	0.0	0.0	0.0		0.0	0.0	8.0	32.0
25	14.0	0.0	0.0	0.0	1.0	0.0	0.0		0.0	0.0	1.0	8.0
26	6.0	2.0	9.0	0.0	31.0	0.0	0.0		0.0	0.0	0.0	4.5
27	0.0	6.0	0.0	2.0	41.0	0.0	0.0		0.0	0.0	7.1	4.0
28	12.0	38.0	0.0	0.0	6.0	0.0	0.0		0.0	0.0	1.5	34.0
29	0.0	8.0	0.0	1.0	7.0	0.0	0.0		0.0	0.0	4.9	22.5
30	0.0		0.0	4.0	0.0	0.0	0.0		0.0	0.0	4.0	1.5
31	13.0		37.0		22.0		0.0			0.0		18.7
Hujan Maks	49.0	59.0	73.0	129.0	73.0	13.0	20.0	24.0	0.0	4.0	31.0	94.0
Jml. Curah Hujan	364.0	284.0	333.0	353.0	361.0	19.0	30.0	24.0	0.0	4.0	152.0	333.3
Jml. Hari Hujan	22	18	13	19	16	2	3	1	0	1	19	26
Jml. data (1-15)	15	15	15	15	15	15	15	15	15	15	15	15
Jml. Hujan (1-15)	215.0	134.0	106.0	191.0	194.0	13.0	20.0	24.0	0.0	4.0	83.0	175.6
Jml. Data (16-31)	16	16	16	15	16	15	16	3	15	16	15	16
Jml. Hujan (16-31)	149.0	150.0	227.0	162.0	167.0	6.0	10.0	0.0	0.0	0.0	69.0	157.7
Tahunan	Hujan Maksimum			Jumlah Curah Hujan			Jumlah Hari Hujan			Hujan Ekstrim		
	129.0			2257.3			140			215		

GRAFIK HUJAN (mm)



DATA CURAH HUJAN HARIAN

Nama Pos	: Tuntang - Jelok	Provinsi	: Jawa Tengah
Nomor Pos	: 83	Kota/Kabupaten	: Semarang
Jenis Alat	: Manual	Kecamatan	: -
Koordinat	: 7 15' 36" LS-110 27' 0" BT	Desa/Kampung	: Tuntang - Jelok
Elevasi	: 480 m	Pengelola	: Balai PSDA Bodri Kuto
SWS - DAS	: Tuntang	Didirikan	: Dinas PU Pengairan
Tahun Pendirian	: -	Tahun	: 2020

TANGGAL	BULAN (mm)											
	Jan	Feb	Mar	Apr	Mei	Jun	Jul	Ags	Sep	Okt	Nov	Des
1	31,0	20,0	15,0	33,0	0,0	0,0	0,0	0,0	0,0	31,0	11,0	23,0
2	16,0	0,0	13,0	0,0	14,0	7,0	0,0	0,0	0,0	54,0	2,0	86,0
3	6,0	2,0	0,0	7,0	0,0	0,0	1,0	0,0	0,0	5,0	0,0	23,0
4	15,0	6,0	0,0	66,0	0,0	0,0	0,0	0,0	0,0	0,0	0,0	35,0
5	0,0	2,0	25,0	84,0	25,0	0,0	0,0	0,0	29,0	0,0	4,0	6,0
6	16,0	28,0	3,0	0,0	0,0	0,0	0,0	0,0	0,0	0,0	30,0	7,0
7	49,0	0,0	0,0	24,0	95,0	0,0	15,0	0,0	0,0	0,0	0,0	15,0
8	6,0	16,0	34,0	57,0	0,0	0,0	0,0	0,0	0,0	0,0	0,0	13,0
9	43,0	0,0	8,0	14,0	13,0	0,0	0,0	0,0	0,0	6,0	0,0	4,0
10	0,0	3,0	2,0	5,0	113,0	30,0	0,0	0,0	0,0	0,0	0,0	15,0
11	51,0	17,0	4,0	16,0	0,0	0,0	0,0	0,0	0,0	15,0	8,0	0,0
12	2,0	1,0	0,0	3,0	70,0	0,0	0,0	26,0	0,0	0,0	4,0	1,0
13	0,0	24,0	0,0	8,0	0,0	0,0	0,0	0,0	0,0	0,0	5,0	82,0
14	0,0	0,0	3,0	29,0	0,0	0,0	0,0	0,0	0,0	0,0	0,0	11,0
15	3,0	0,0	0,0	0,0	0,0	0,0	0,0	0,0	0,0	0,0	10,0	8,0
16	13,0	12,0	31,0	3,0	0,0	9,0	0,0	0,0	0,0	3,0	3,0	8,0
17	41,0	16,0	0,0	0,0	0,0	0,0	0,0	0,0	9,0	0,0	0,0	0,0
18	18,0	3,0	91,0	2,0	0,0	0,0	0,0	0,0	0,0	0,0	0,0	17,0
19	0,0	6,0	3,0	0,0	116,0	0,0	0,0	0,0	0,0	0,0	0,0	3,0
20	0,0	67,0	73,0	0,0	5,0	0,0	0,0	0,0	0,0	9,0	9,0	0,0
21	17,0	0,0	0,0	0,0	0,0	0,0	2,0	0,0	0,0	58,0	58,0	0,0
22	13,0	0,0	0,0	16,0	0,0	0,0	3,0	0,0	81,0	0,0	4,0	0,0
23	0,0	0,0	0,0	0,0	0,0	0,0	0,0	0,0	28,0	0,0	5,0	28,0
24	29,0	0,0	8,0	111,0	3,0	0,0	0,0	0,0	0,0	0,0	7,0	0,0
25	4,0	0,0	0,0	0,0	6,0	0,0	0,0	0,0	0,0	0,0	11,0	31,0
26	10,0	6,0	10,0	0,0	0,0	0,0	0,0	0,0	0,0	0,0	1,0	3,0
27	0,0	3,0	0,0	2,0	31,0	0,0	0,0	0,0	7,0	0,0	0,0	0,0
28	11,0	28,0	3,0	0,0	0,0	0,0	0,0	0,0	0,0	0,0	0,0	37,0
29	0,0	29,0	5,0	0,0	11,0	0,0	0,0	0,0	0,0	0,0	0,0	61,0
30	18,0		0,0	0,0	0,0	0,0	0,0	0,0	0,0	0,0	0,0	29,0
31	15,0		40,0		33,0		0,0	0,0		0,0		6,0
Hujan Maks	51,0	67,0	91,0	111,0	116,0	30,0	15,0	26,0	81,0	58,0	58,0	86,0
Jml. Curah Hujan	427,0	289,0	371,0	480,0	535,0	46,0	21,0	26,0	154,0	181,0	172,0	552,0
Jml. Hari Hujan	22	19	18	17	13	3	4	1	5	8	16	24
Jml. data (1-15)	15	15	15	15	15	15	15	15	15	15	15	15
Jml. Hujan (1-15)	238,0	119,0	107,0	346,0	330,0	37,0	16,0	26,0	29,0	111,0	74,0	329,0
Jml. Data (16-31)	16	14	16	15	16	15	16	15	16	16	15	16
Jml. Hujan (16-31)	189,0	170,0	264,0	134,0	205,0	9,0	5,0	0,0	125,0	70,0	98,0	223,0
Tahunan	Hujan Maksimum			Jumlah Curah Hujan			Jumlah Hari Hujan			Hujan Ekstrim		
	116,0			3254,0			150			151		

GRAFIK HUJAN (mm)

